

## Documentary for public relation



## CROCODILE CAPTIVE BREEDING



Nest defense behavior by a female Siamese crocodile



### Biology of the Siamese crocodiles in Cambodia, Vietnam, Lao PDR, and Indonesia

- Distribution, feeding ecology, and community-based conservation in Cardamom Mountains, Cambodia
- Distribution, genetic, re-introduction in Cat Tien NP and Song Hinh, Vietnam
- Distribution in Savarnakhet, Lao PDR
- Distribution in Malaysia
- Distribution in East Kalimantan, Indonesia
- Distribution, genetic, re-introduction, feeding ecology, utilization, disease screening, Thailand

#### Other studies in *C. siamensis*

- Hybridization: Dr. Somsak Apsitvanich
- Identification of purebred: Dr. Nancy FitzSimmons
- Fish Ear as index of prey: Dr. Sawai Wanghongsa
- Hemoglobin: Dr. Sompong Thammasirirak
- Antibacterial activities: Dr. Sompong Thammasirirak, Dr. Kiattawee Choowongkomol
- Antiviral activities: Dr. Kiattawee Choowongkomol
- Innate Immunity activities: Dr. Mark Merchant
- Proteomics: Dr. Sakda Daduang
- Histology of reproductive organs: Dr. Sompop Navipap
- Novel Crocosin: Dr. Suthideth Preecharam
- Blood & Intestinal Parasites: Dr. Jindawan Siruntawinetti

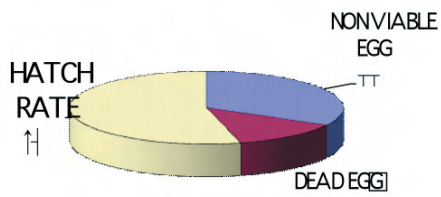
#### Numbers of publication by country

Thailand	42
Cambodia	13
Vietnam	13
Lao PDR	9
Malaysia	1
Indonesia	7
Others	15
<b>Total</b>	<b>100</b>





Hatch rate from a standard incubator



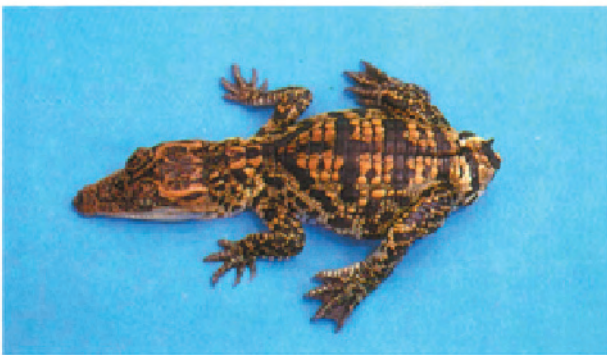
Calcium Deficiency



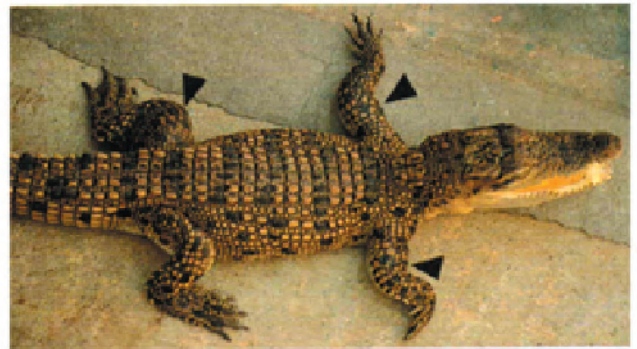
Vitamin E Deficiency



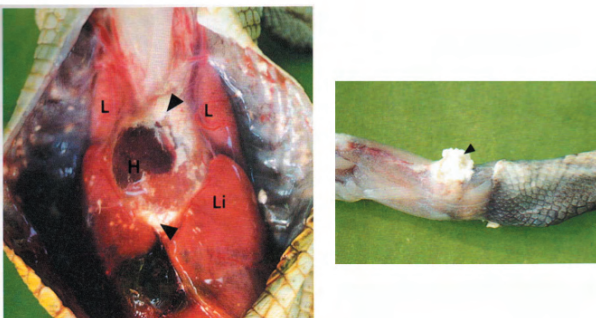
Birth Defect (Abnormality)



Vitamin D Deficiency



Gout





### CITES-registered crocodile farms in Thailand contribute to conservation

- Yearly donation to CSG and \$50,000 self-funding to a re-introduction project phase II at Bung Borapet
- Support a large number of purebred specimen per year for re-introduction
- Co-operate with the government agencies and CSG for conservation and education program
- Last but not least, ensure that trade is not detrimental to their survival.



### Re-introduction Program at Bung Boraphet, Central Thailand



- Siamese crocodile historical habitat
- Largest freshwater lake in Thailand
- High Habitat Suitability Index (HSI)
- Co-operation with local fishermen
- Wildlife sanctuary
- Umbrella species

### Re-introduction Project Phase II at Bung Boraphet

1. Survey for Habitat Suitability
2. Night-light survey for monitoring
3. Prepare pure-bred and healthy crocodiles
4. Public hearing and education
5. Radio telemetry for monitoring of the growth and survival rates and other demographic information, tourism...

### Linkage between conservation-industry

- Department of Fisheries
- Department of National Parks, Wildlife and Plant Protection
- Faculty of Veterinary Science, Mahidol University
- CMAT (Crocodile Management Association of Thailand)
- COCOT (Crocodile Co-operatives of Thailand)
- CSG (IUCN-SSC Crocodile Specialist Group)

